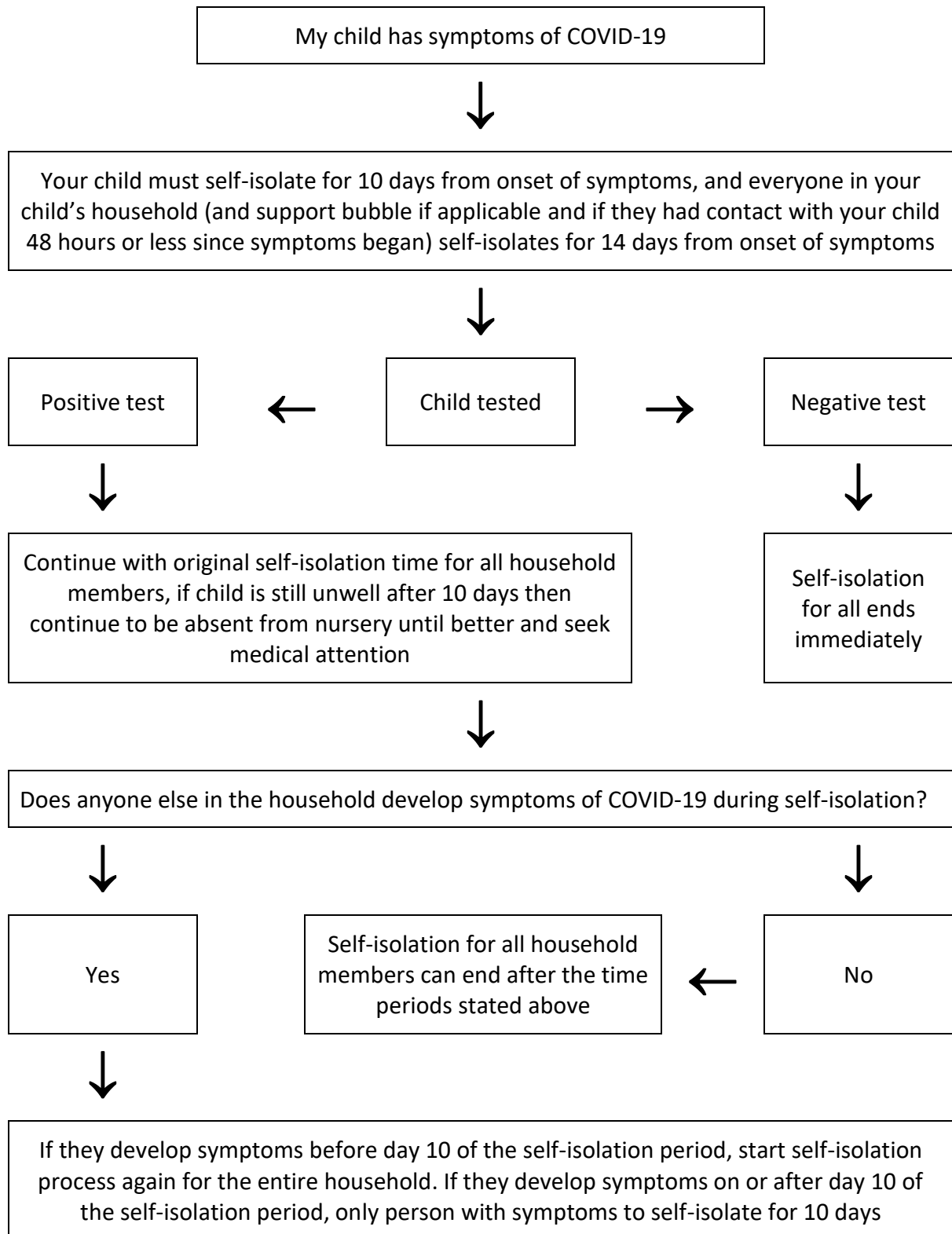
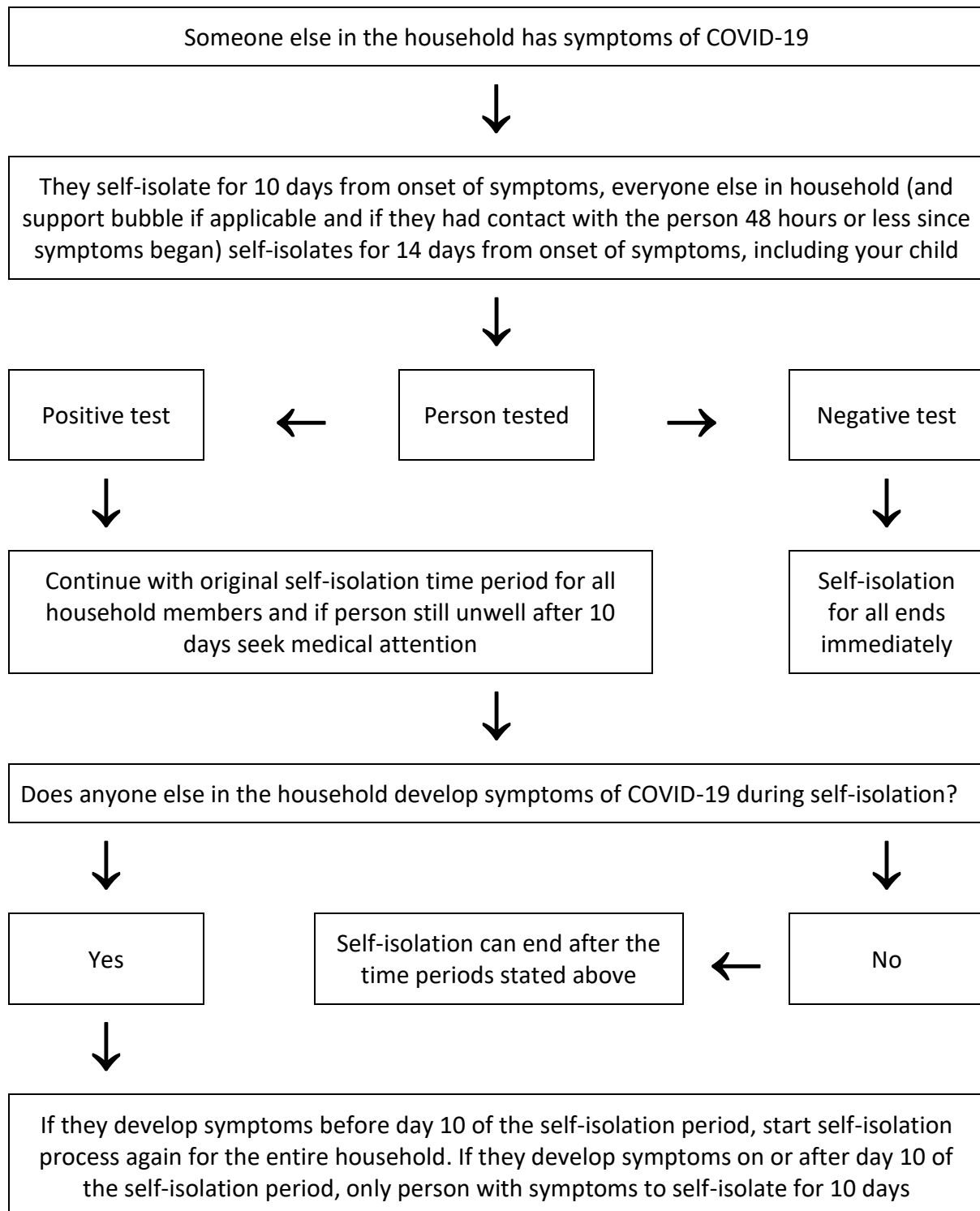


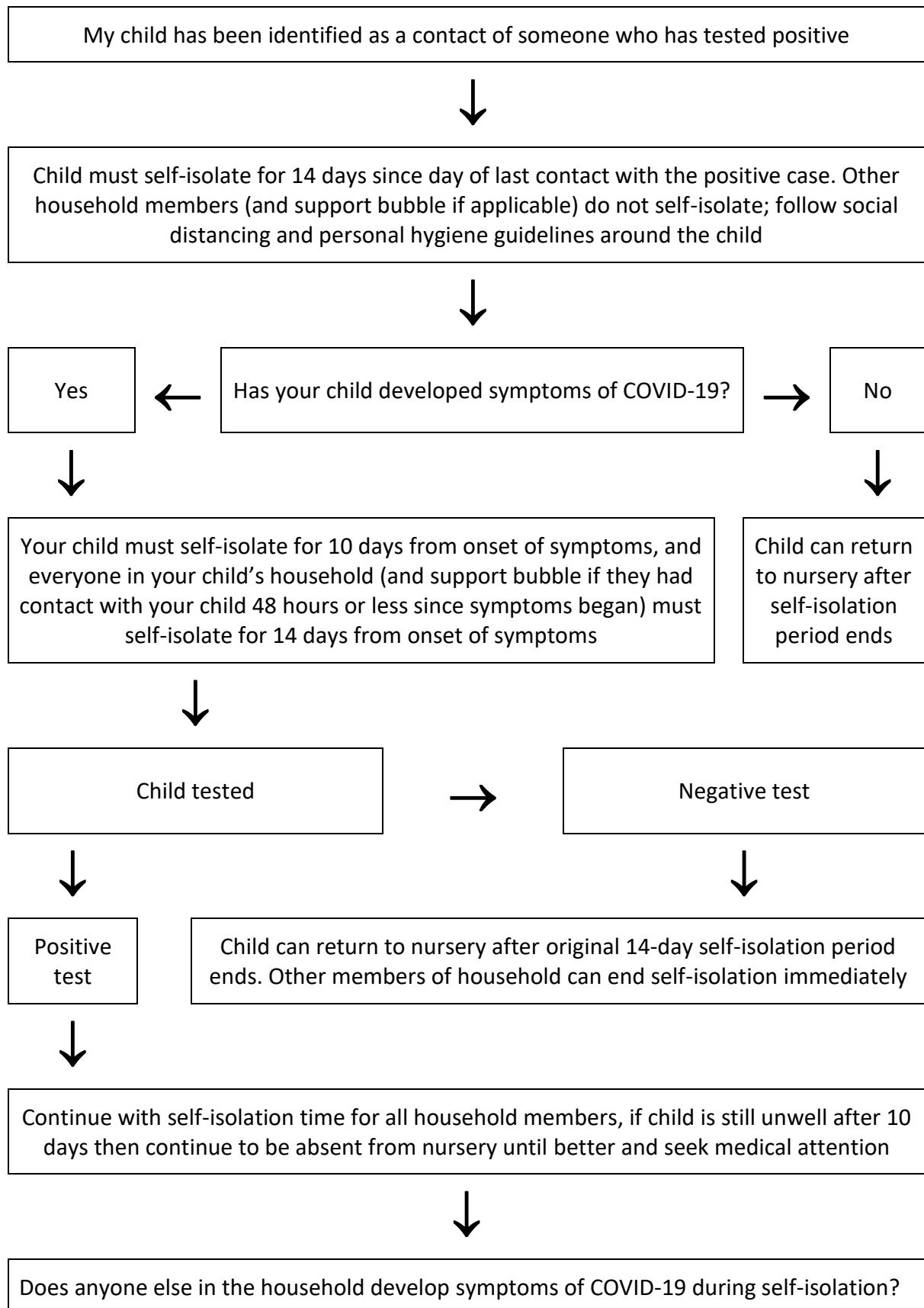
## COVID-19 flowchart: child has symptoms of COVID-19



## COVID-19 flowchart: other household member has symptoms of COVID-19



## COVID-19 flowchart: child identified as a contact of someone tested positive





Yes



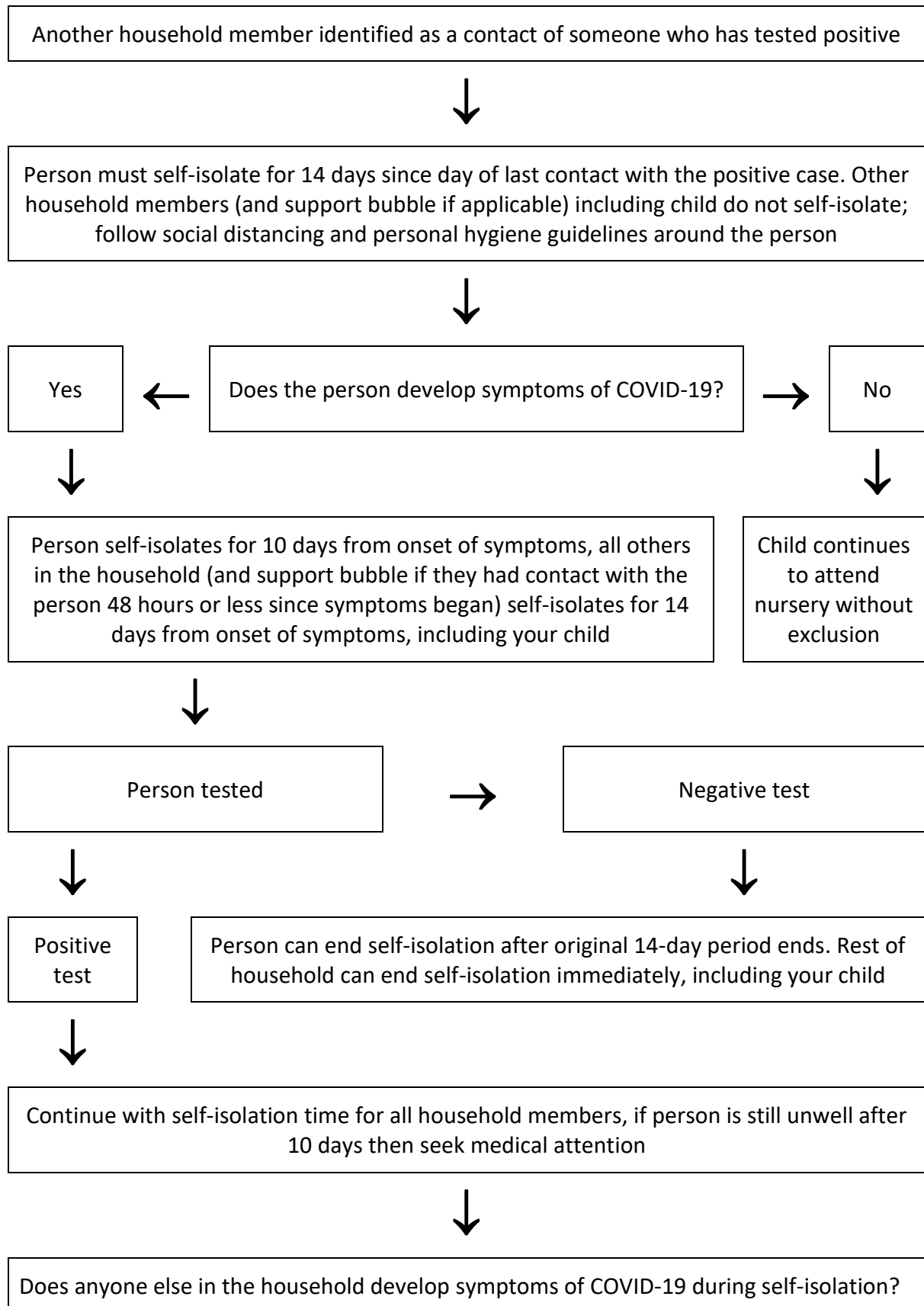
Self-isolation for all household members can end after the time periods stated above

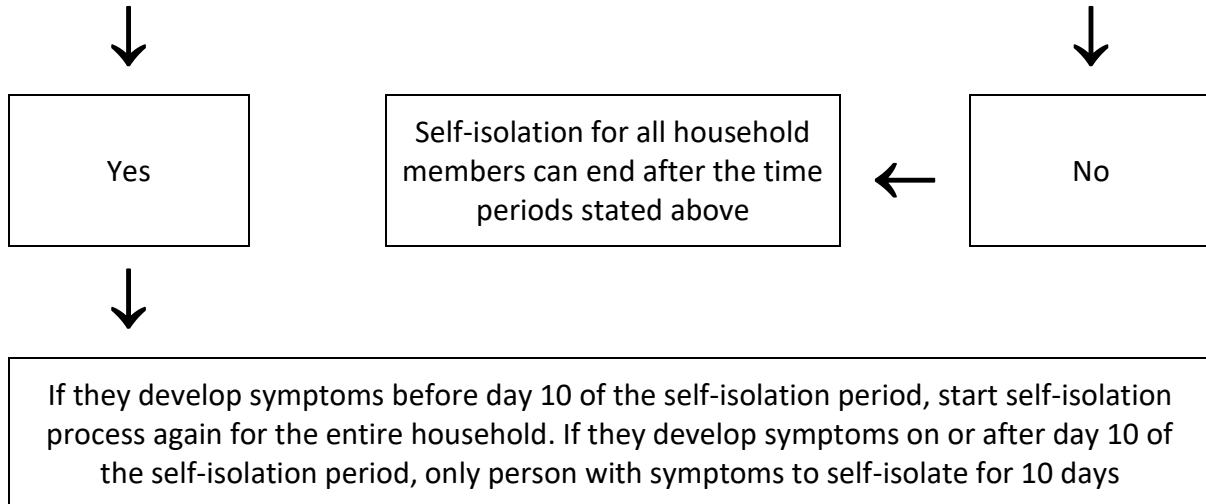


No

If they develop symptoms before day 10 of the self-isolation period, start self-isolation process again for the entire household. If they develop symptoms on or after day 10 of the self-isolation period, only person with symptoms to self-isolate for 10 days

## COVID-19 flowchart: other household member identified as a contact of someone tested positive





Guidance sources:

<https://www.gov.uk/government/publications/covid-19-stay-at-home-guidance/stay-at-home-guidance-for-households-with-possible-coronavirus-covid-19-infection>

<https://www.nhs.uk/conditions/coronavirus-covid-19/testing-and-tracing/nhs-test-and-trace-if-youve-been-in-contact-with-a-person-who-has-coronavirus/>

Revised: September 2020

Review date: October 2020